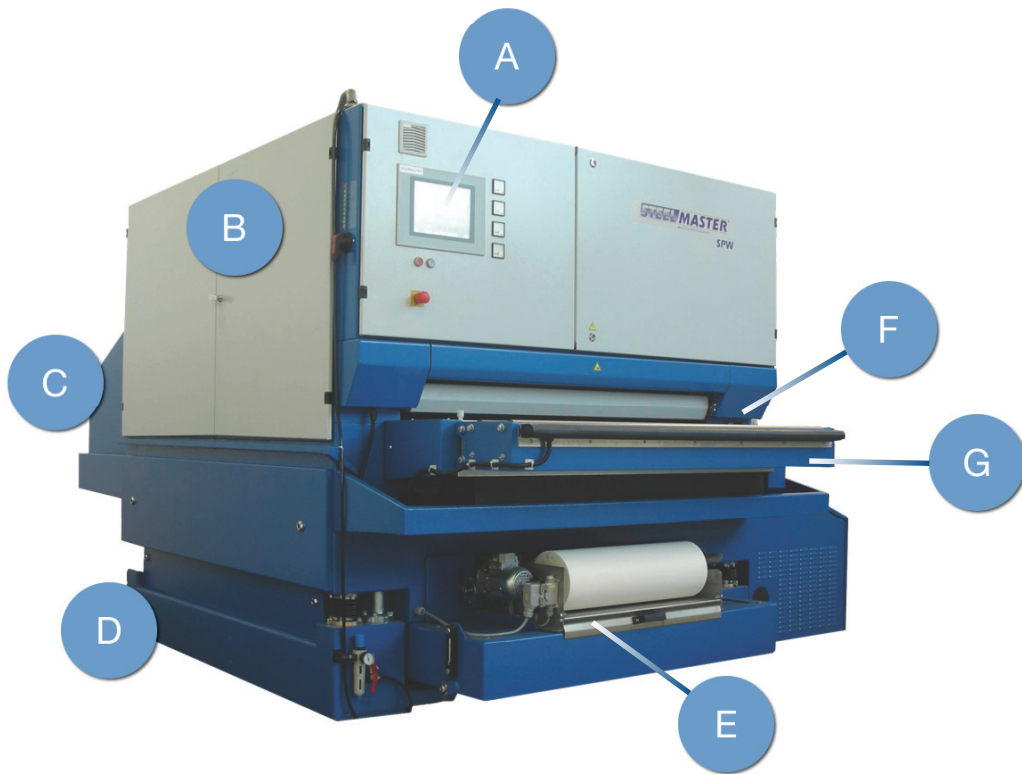




STEELMASTER

A DIVISION OF BUETFERING GMBH

Some key features of a Steelmaster



- A Touch screen terminal
- B Interior of machine
- C Drying station
- D High precision operation
- E Integrated filtration unit
- F Safety features
- G Conveyor belt tracking system

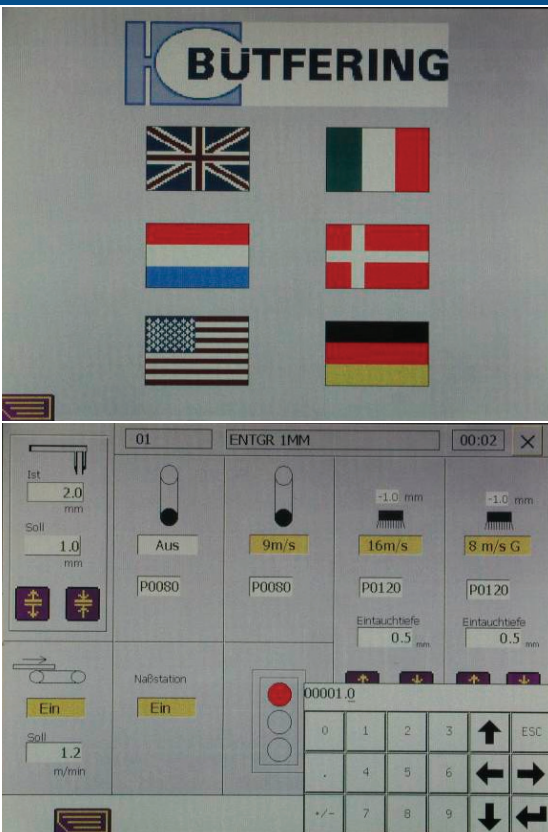
The Siemens S7 300 control



Take control!

With the Siemens S7 and the TE14 touch screen terminal control of the Steelmaster is a breeze.

Every application needs a different setting and setting up a machine takes time. The Siemens S7 allows you to save up to 1024 programs meaning that you can save every project so that you do not need to set up the machine the next time you need to do a similar project.



High accuracy

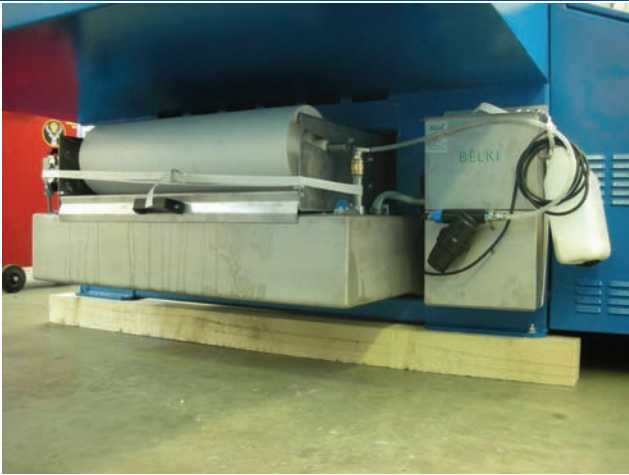
1/10 mm step high adjustment

Material thickness setting in increments of 1/10 mm (0.0039") or 1/100* mm (0.00039"). The maximum part thickness is 120 mm(4.72").

*This is optional



Inside machine frame



The integrated filtration unit

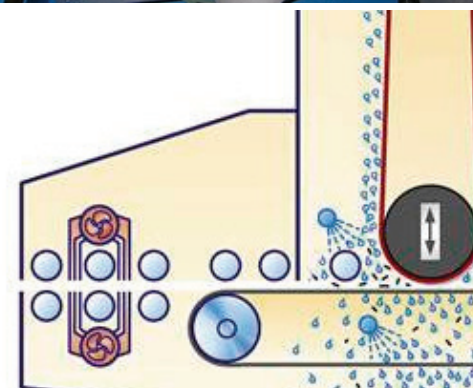
The Steelmaster SMW has an integrated filtration system to separate the dust from the coolant. This enhances the lifetime of the coolant and the machine.



Drying of parts

Drying station

The Steelmaster SMW is standard equipped with a drying station. Parts are squeezed dry by squeeze rollers. There are also two air knives on both sides (top and bottom) making sure no fluids remain on the parts after leaving the machine.



Outside of machine frame in dry zone



Separation of electrical parts and fluids

Every critical part of the machine is separated from fluids. All electrical components like motors, frequency inverters and switches are placed in a dry zone. Also the bearings are sealed so that no fluids can get in.

Spindles in dry zone

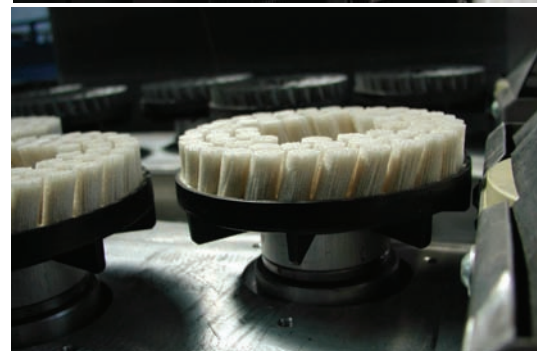
The entire machine is lifted by four spindles when the part thickness is being adjusted. These spindles are all in the dry zone making sure they are kept clean and maintain their accuracy.



Easy exchangeability

Easy exchangeable aggregates

In a Steelmaster top brushes and barrel brushes can be exchanged in a matter of minutes. The system is designed that both brush types will fit in the same aggregate. This brings great flexibility and allows to do many different applications on the same machine.



Abrasive belt tracking with photo-eye



Photo optic tracking eye

Keeping a wide abrasive belt on the right track can be tricky. Steelmaster has solved this problem with a water proof photo optic tracking eye which operates a pneumatic cylinder that steers the abrasive belt in the right direction. When using a photo optic eye there is no wearing of components which extends their lifetime dramatically



Conveyor belt tracking system

Tracking of the conveyor belt

The conveyor belt does not need to be adjusted because the Steelmaster is equipped with an automatic tracking system for the conveyor belt.



Safety



Safety features

Standard safety features of the Steelmaster are:

- 3 emergency switches
- Door switches on all doors
- Finger safety switch
- Over thickness protection



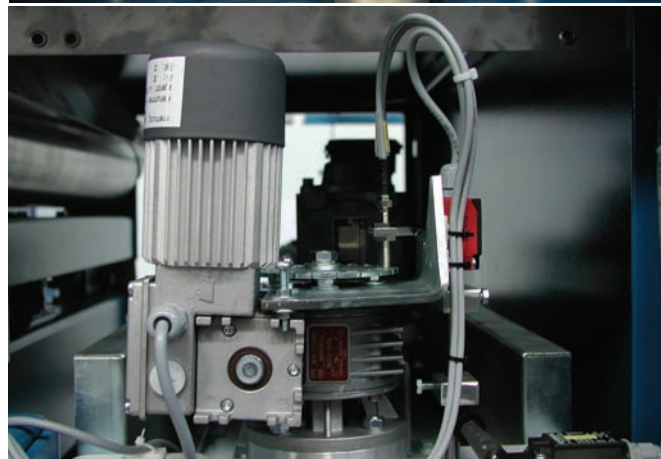
Height adjustable heads

Belt wear compensation

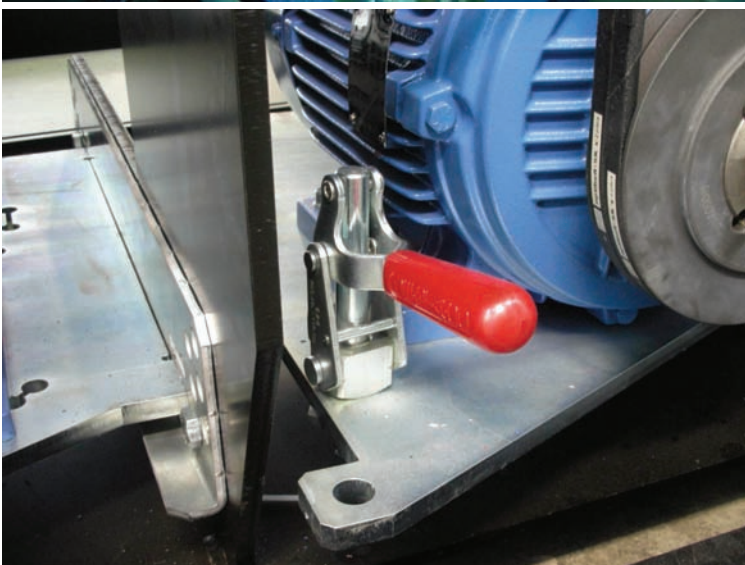
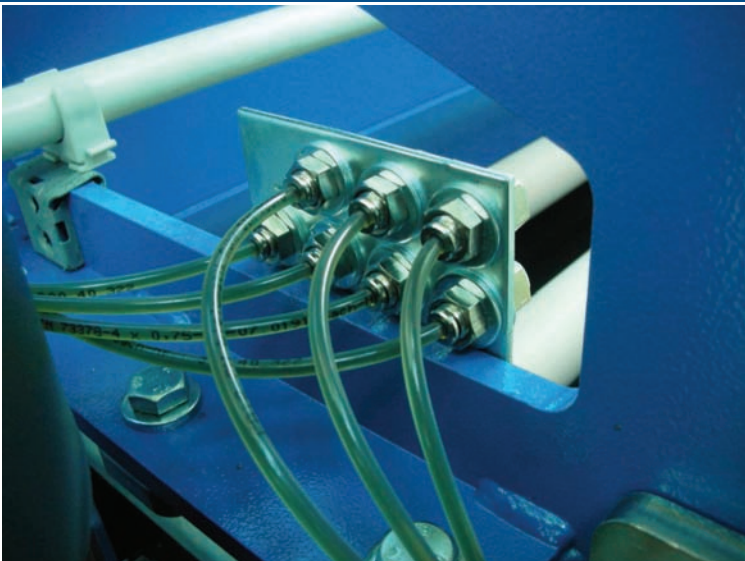
All heads in a Steelmaster have independent height adjustment. This is a huge advantage when working with different types of abrasive belts for example Scotch brite®

Having height adjustable heads brings great flexibility to a deburring or finishing machine because it allows you to apply more or less pressure the surface of a part. It also serves as grit compensation.

Even top brush cassettes can be adjusted making the more aggressive on the edges or to compensate for the wear of the brushes.



Convenience



Easy access

The design of the Steelmaster allows you to open up the entire machine so that maintenance is easy and fast.

All bearings that are in the wet area are sealed to ensure a long lifespan. The central lubrication system allows you to lubricate all these bearings at the same time with a simple pull on a lever.

All the covers of the machine can be removed within a matter of seconds. All components within the Steelmaster are easy accessible when the covers are removed.

Technical Details

Type SMW		Machine dimensions	
No. Of heads	1-4	Height mm (inch)	2080 (81.9)
Compressed air bar (psi)	6.0 (87)	Width mm (inch)	2670 (105.2)
Abrasive belt length mm (inch)	1900 (75)	Length mm (inch)	2935 (115.5)
Abrasive belt width max mm (inch)	1370 (54)	Capacity of coolant tank L (gal)	640 (169.1)
Working width	1350 (53)	Weight (lb)	6100 (13449)