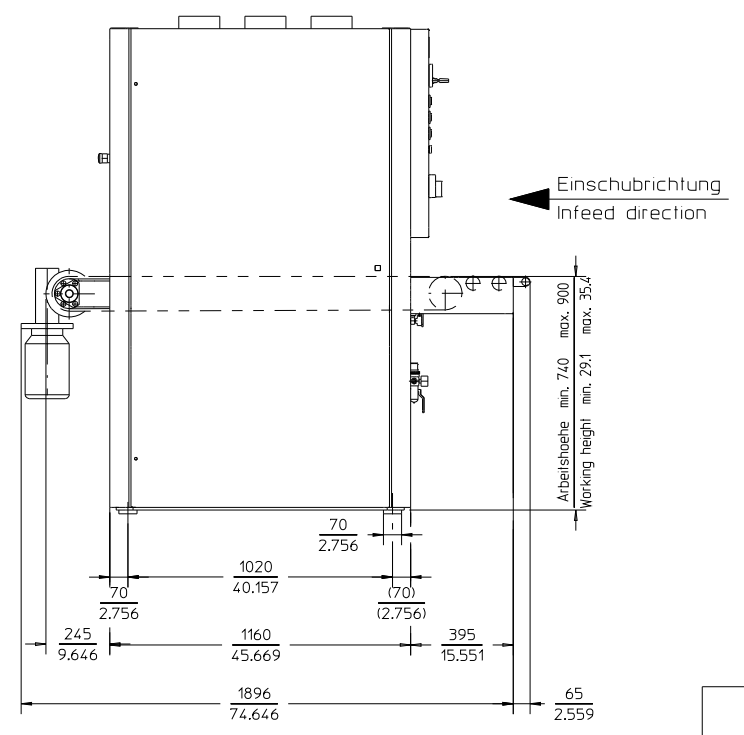
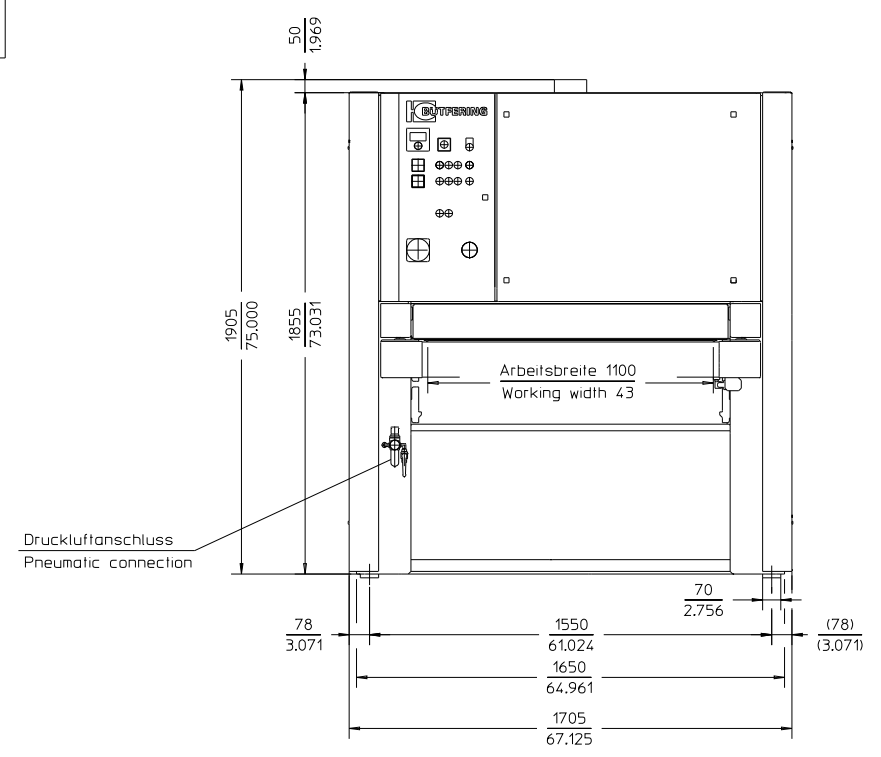
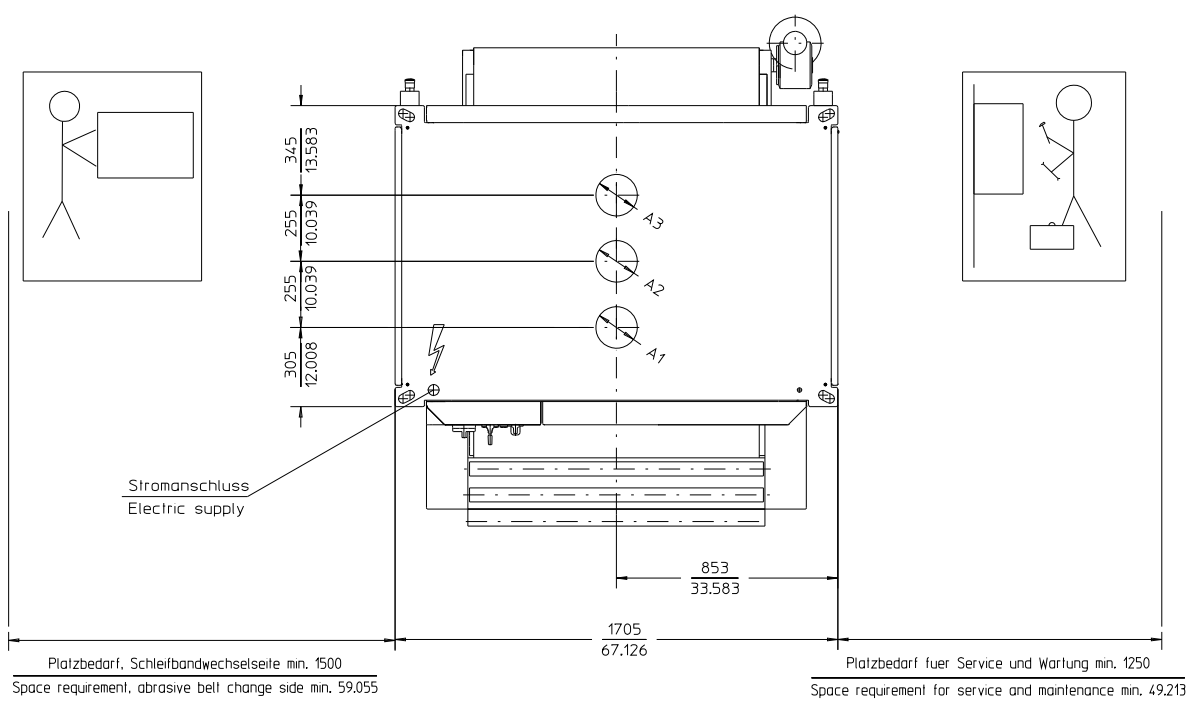


Bsp./example
50 mm
1.969 inch



Standard Aufstellplan
Standard floor plan



	Maschinenvariante Machine option		RRB/RRT
	Absaugung Dust extraction	m/s	20 - 23
	Maschinenwiderstand Resistance of the machine	Pa	800
A1	1. Aggregat 1. Head	Ø mm cbm/h	160 1450 - 1665
A2	2. Aggregat 2. Head	Ø mm cbm/h	160 1450 - 1665
A3	3. Aggregat 3. Head	Ø mm cbm/h	160 1450 - 1665
	Gesamt Volumenstrom Aggregate Total volume flow, heads	cbm/h	4350 - 4995
	Pneumatik Pneumatics	bar Ø Zoll	6 - 8 1/4
	Gesamter Druckluftverbrauch Aggregate Total compressed air consumption, heads	l/min	40
	Elektrik (IP54) Electric (IP54)	V/Hz V/Hz	230/60 400/50 460/60
	Empfohlene Vorsicherung Recommended main fuse	A	110 63
	Anschlussleistung Maschine Connected value machine	kW	32
	Gewicht Weight	kg	2300